

HiMetal 特金属
Enterprise Pte Ltd

HiMetal Enterprise Pte Ltd

Your Preferred Partner For Stainless Steel Solutions.



Your Preferred Partner For
Stainless Steel Solutions.

About Us

HiMetal Enterprise Pte Ltd is one of the leading Stainless Steel stockist in Singapore, supplying various sizes of sheets, plates and extrusions.

Other than Stainless Steel, we also carry stock of Aluminium and Galvanized Steel plates in different sizes and dimensions, with the industry's most recognised grades.

Founded in 2011, we strive to provide the excellent customer service with our timely delivery, quality of works and the competitive pricing at all times.

We source and import the high quality metal products from the reliable and reputable mills worldwide to delight our customers with value-for-money products.

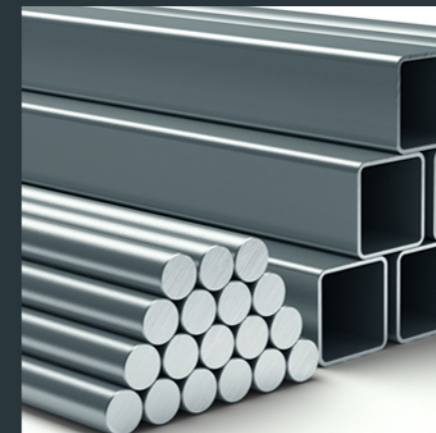
We are committed to communicate effectively and build trust with the customers for our sustainable growth. We also focus on satisfying customer requirements with continuous improvement spirit.

HiMetal Enterprise is a subsidiary of Esun International Pte Ltd.



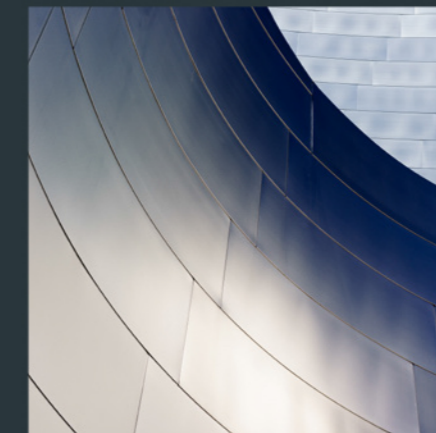


Our Products



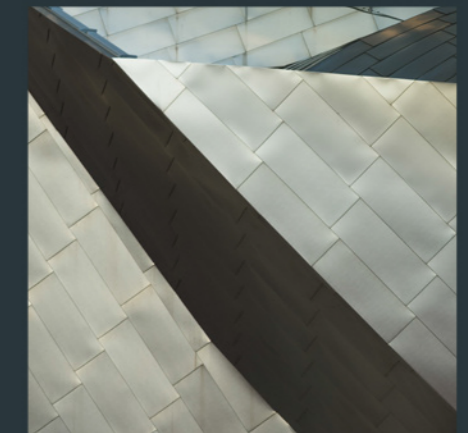
Stainless Steel

HiMetal specialises in stainless steel plates, pipes and bars catering mainly for construction, marine, engineering and related applications.



Aluminium

HiMetal specialises on Aluminium flat plates and chequered plates, catering mainly for construction, aerospace, automobile, packaging, marine, engineering and related applications.



Galvanised

HiMetal specialises in ElectroGalvanised and Hot-Dip galvanised steel mainly for construction, automobile, electronic, marine, engineering and related applications.

HiMetal Enterprise specialises on Stainless Steel products in Singapore. We supply wide range of flat and long products to our valued customers for retail, wholesale and project order. We also engaging in trading business for indent order of Stainless Steel, Ferrous and Non-Ferrous materials.

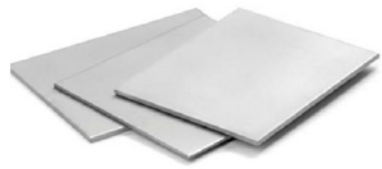
Call us today
+65 6887 9688



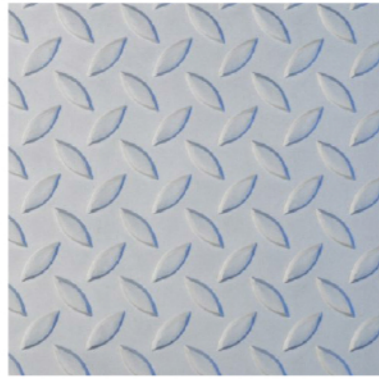
Stainless Steel

Stainless Steel is renowned for its bright aesthetic appeal and easily maintained surface. With the correct equipment it can be cut, welded, formed, machined and fabricated. It has both excellent corrosion and high temperature resistance.

HiMetal stock a wide range of Stainless Steel extrusions, plates, sheets and bars in a variety of sizes and grades to help you find exactly what you need.



Sheet / Plate



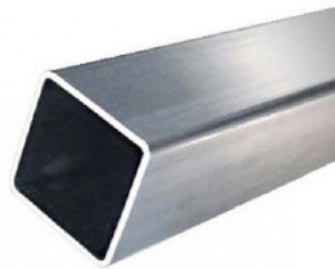
Chequered Plate



Perforated Sheet



Round Pipe / Hollow Section



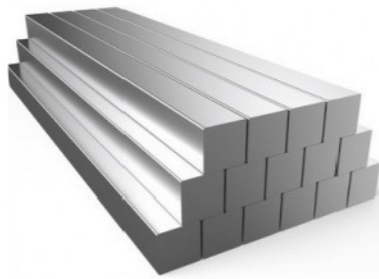
Square Pipe / Hollow Section



Rectangular Pipe/Hollow Section



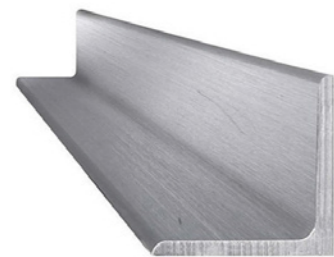
Round Bar



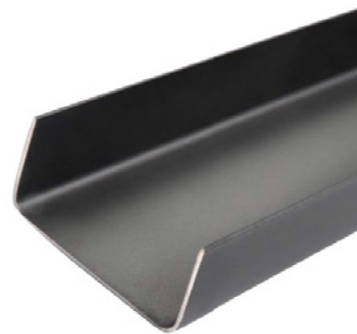
Square Bar



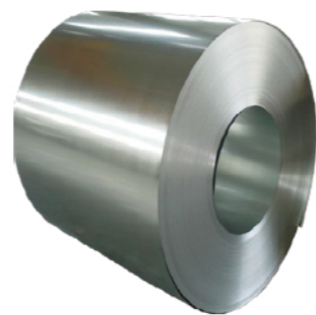
Flat Bar



Angle Bar



C-Channel



Coil

Visit our website to learn more
www.himetal.com.sg



Stainless Steel Plate

HiMetal offers hot rolled and cold rolled steel sheet and plate in a broad range of lengths, widths, gauges, alloys, and specifications to meet your material requirements.

Hot-Rolled or Cold-Rolled	
Grade: 304/304L, 316/316L, 409L and others	
Specification/Standard: ASTM A240/A480	
Finishing	No.1(1B), 2B, 4B(No.4/Satin), HL, ND (Non-Directional/Vibration), BA, No.8(Mirror/8K) and other PVD Titanium Colour Coating
Thickness	0.4mm – 20.0mm
Size	4ft x 8ft , 4ft x 10ft, 5ft x 8ft, 5ft x 10ft

Chequered Plate

Chequered plates are used in many fields, the most popular being tread plate. Modern uses include architectural metal materials used in wall and ceiling cladding.

Hot-Rolled or Cold Pressed	
Grade: 304/304L, 316/316L	
Specification/Standard: ASTM A240/A480	
Finishing	No.1(1B)
Thickness	3.0mm – 6.35mm
Size	4ft x 8ft , 4ft x 10ft, 5ft x 10ft

Perforated Sheet

Used for its variety of holes sizes, percentage of open area, high strength-to-weight ratio, and aesthetic appeal, perforated sheet is popular for a broad spectrum of uses.

Cold-Rolled	
Grade: 304/304L, 316/316L	
Specification/Standard: ASTM A240/A480	
Finishing	2B
Thickness	0.4mm – 6.0mm
Hole Diameter	3.0mm – 15.0mm
Size	4ft x 8ft

Stainless Steel Round Pipe (CHS)

Hollow sections / pipes are used for a variety of purposes. They are produced by two distinct methods which result in either a welded or seamless pipe.

Grade: 304/304L, 316/316L	
Specification/Standard: ASTM A554	
Finishing	#600 (BA) , HL
Thickness	1.2mm – 3.0mm
Diameter	12.7mm – 101.6mm
Length	6 metres

Stainless Steel Square Pipe / Hollow Section (SHS)

Stainless Steel Square Pipe is ideal for all structural applications where greater strength and superior corrosion resistance is required.

Grade: 304/304L, 316/316L	
Specification/Standard: ASTM A554	
Finishing	#600 (BA) , HL
Thickness	1.2mm – 6.0mm
Size	12.7 x 12.7mm – 100 x 100mm
Length	6 metres

Stainless Steel Rectangular Pipe / Hollow Section (RHS)

Stainless Steel Rectangle pipe is a welded structural grade tubing that is available in various specifications, depending on its size and wall thickness.

Grade: 304/304L, 316/316L	
Specification/Standard: ASTM A554	
Finishing	HL
Thickness	1.2mm – 6.0mm
Size	25 x 12mm – 100 x 50mm
Length	6 metres

Round Bar

Stainless Steel Round Bar can be produced in a hot-rolled / cold-drawn process, is ideal for all general fabrication, manufacturing and repairs.

Cold Drawn Polished	
Grade: 304/304L, 316/316L	
Specification/Standard: ASTM A276/A484	
Finishing	Bright Polished
Diameter	3.0mm – 25.0mm
Length	4 metres or 6 metres

Square Bar

Stainless Steel Square Bar can be produced in hot rolled / cold drawn process with radius corners that is ideal for all structural applications, general fabrication, manufacturing and repairs.

Cold Drawn Polished	
Grade: 304/304L, 316/316L	
Specification/Standard: ASTM A276/A484	
Finishing	Mill Finish (2B), HL
Size	5 x 5mm – 12.7 x 12.7mm
Length	4 metres or 6 metres

Flat Bar

Flat bars are widely used for all general fabrication and repairs in industrial maintenance, agricultural implements, transportation equipment, etc.

Hot-Rolled or Cold-Rolled	
Grade: 304/304L, 316/316L	
Specification/Standard: ASTM A276/A484	
Finishing	No.1(1B), 4B, HL, ND
Thickness	3.0mm – 25.0mm
Size (Width)	6.0mm – 150.0mm
Length	4 metres or 6 metres

Angle Bar

An angle bar, also known as an "L-bracket" or an "angle iron," is a metal bracket in the form of a right angle. Angle bars are often utilized to support beams and other platforms, but their usefulness goes beyond their usual role.

Hot-Rolled	
Grade: 304/304L, 316/316L	
Specification/Standard: ASTM A276/A484	
Finishing	No.1(1B)
Thickness	3.0mm – 9.0mm
Size	20 x 20mm – 100 x 100mm
Length	6 metres

C-Channel

C Channel is a hot rolled stainless channel shape with inside radius corners that is ideal for all structural applications where greater strength and superior corrosion resistance is required.

Hot-Rolled	
Grade: 304/304L, 316/316L	
Specification/Standard: ASTM A276/A484	
Finishing	No.1(1B)
Thickness	3.0mm – 6.0mm
Size	50 x 25mm – 150 x 75mm
Length	6 metres

Coil

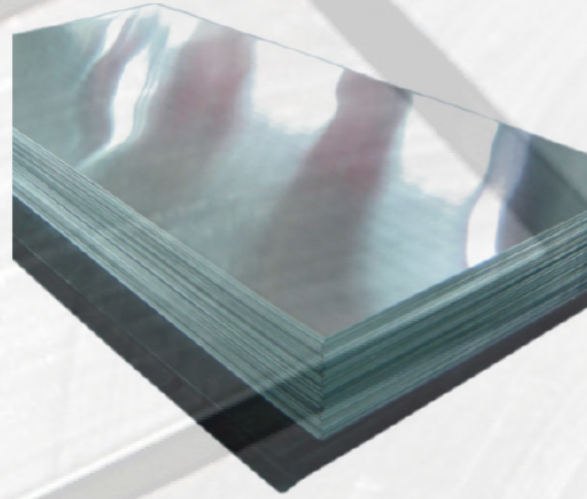
Stainless steel coil and sheet is part of the austenitic family of stainless steel. Possesses a very good drawability and excellent corrosion resistance in chemical, textile, petroleum and food industry exposure.

Hot-Rolled or Cold-Rolled	
Grade: 304/304L, 316/316L, 409L and others	
Specification/Standard: ASTM A240/A480	
Size	4ft or 5ft width or other slitted dimension

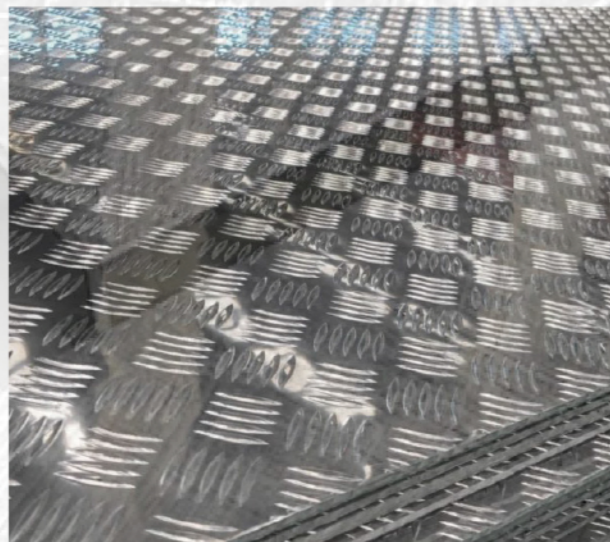
Aluminium

Aluminium is now the second most popular metal used today in metal work applications because it is lightweight, highly malleable and offers excellent machining capabilities and corrosion resistance.

HiMetal stock a wide range of aluminium plates and sheets in a variety of sizes and grades to help you find exactly what you need.



Aluminium Plate



Chequered Plate

Visit our website to learn more
www.himetal.com.sg



Aluminium Plate

Aluminum Alloy Plate 1100

1100 aluminum alloy has minimum of 99% purity with Low strength non-heat treatable and excellent corrosion resistance. It is easily welded, brazing, soldering and has excellent thermal and electrical conductivity.

Aluminum Alloy Plate 3003

3003 aluminum alloy is an aluminium-manganese alloy which is approximately 20% stronger than alloy 1100. This alloy is readily formed by either conventional cold working or hot working.

Aluminum Alloy Plate 5052

5052 Aluminium Alloy is a non-heat treatable alloy that is weldable. It is hardened by cold work. It has good weldability, formability and corrosion resistance. Including resistance to salt water.

Aluminum Alloy Plate 6061

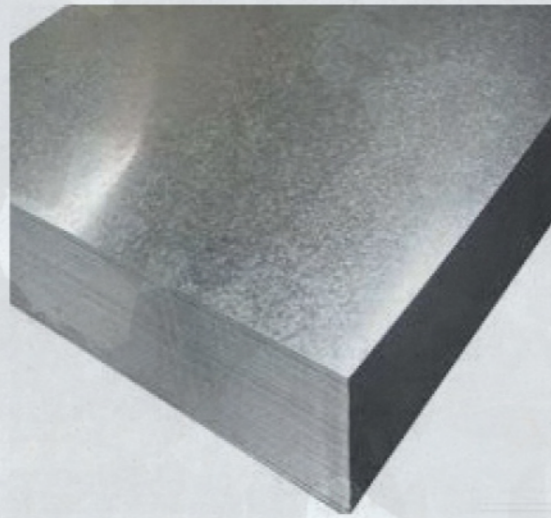
The most versatile of the heat treatable aluminum alloys is 6061. It offers a wide range of mechanical properties and corrosion resistance, weldability and good formability in the annealed and T4 condition. The T6 properties may be obtained by artificial aging. It is welded by many methods.

Mill Finish	
Grade: 1100, 3003, 5052, 6061	
Specification/Standard: ASTM B209 / GB/T 3880	
Thickness	0.8mm – 6.0mm
Size	4ft x 8ft , 4ft x 10ft, 4ft x 12ft, 5ft x 10ft, 5ft x 12ft

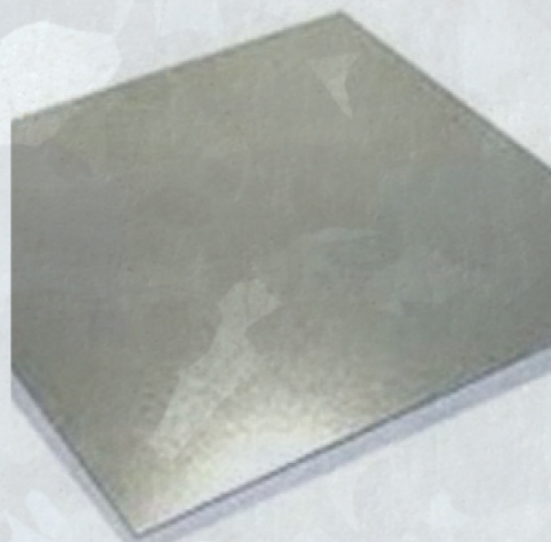
Chequered Plate

Provides traction as beds for heavy-duty automobiles and speed boats etc. Also used for industrial walkways, ramps and stairs etc.

Mill Finish (Small 5 Bars Pattern)	
Grade: 3003, 5052	
Specification/Standard: ASTM B209 / GB/T 3880	
Thickness	3.0mm – 6.0mm
Size	4ft x 8ft , 5ft x 10ft



Hot Dip Galvanized Steel Sheet



Electro Galvanized Steel Sheet

Galvanized Steel

Galvanized steel is produced by coating the steel in zinc. The properties of galvanized steel are a unique combination that make it ideal for use in interior and exterior applications such as car bodies, appliances, nuts and bolts, roofs, and rebar.

HIMetal stock a wide range of Galvanized Steel in a variety of sizes and grades to help you find exactly what you're looking for.

Visit our website to learn more
www.himetal.com.sg



Hot Dip Galvanized Steel Sheet

Galvanized Steel Sheet are popular in construction, light industry, automobile, farming, animal husbandry, fishery, commerce and other industries. In construction, it is used to make corrosion resistant outer panels of buildings, corrugated iron sheet, roof grizzly screen for industrial and home use. In light industry, it is commonly used for making shells for home appliances, civil chimney, kitchenware and so on. This product is applied to anti-corrosion parts of automobile. It plays an important role in making tools for freezing and processing the meat, marine products, transporting and storing the foodstuffs and commercial goods, as well as packing. This product is also suited for stretching and deep stamping materials.

Hot-Dip Galvanized Sheet (GI)	
Specification/Standard: SGCC JIS G3302	
Thickness	1.0mm – 3.0mm
Size	4ft x 8ft , 4ft x 10ft , 5ft x 10ft

Electro Galvanized Steel Sheet

Electro Galvanizing utilizes an electrical current in an electrolyte solution to transfer zinc ions onto the base metal. This involves electrically reducing positively charged zinc ions to zinc metal which are then deposited on the positively charged material. Grain refiners can also be added which helps to ensure a smooth zinc coating on the steel. Similar to the pre-galvanising process, electrogalvanising is typically applied continuously to a roll of sheet metal.

Some advantages of this process are a uniform coating and precise coating thickness. However, the coating is typically thinner than the coating of zinc achieved by the hot-dip galvanising method which can result in reduced corrosion protection.

Electro-Galvanized Sheet (EG)	
Specification/Standard: SECC JIS G3313	
Thickness	1.0mm – 3.0mm
Size	4ft x 8ft , 4ft x 10ft , 5ft x 10ft

HiMetal 特金属
Enterprise Pte Ltd

HiMetal Enterprise Pte Ltd

99 Tuas South Ave 2,
Singapore 637227

Phone: +65 6887 9688

Fax: +65 6268 6737

Email: enquiry@himetal.com.sg

Website: www.himetal.com.sg